



Alfa Laval Indication Units for LKB/LKLA - Inductive

When Indication is all you Need

Concept

The indication units from Alfa Laval are designed as a simple and easy to use, electrical feedback unit for Laval butterfly valves. The units are compatible with all major PLC (Programmable Logic Controller with PNP/NPN interface) and used in food, dairy and brewery installations and in biopharmaceutical applications.

Working principle

The inductive prox. switches are non-contact electronic switching elements. The output signal is always a digital signal (on/off).

These indication units are easily mounted without any further mechanical adjustments and have to be installed between the air operated actuator and the valve.



TECHNICAL DATA

Communication

Electrical design DC PNP
Operating voltage 10...36 V DC
Output function 2 x NO
Current consumption < 15 mA
Current rating 250 mA
Electrical connection M12 plug



PHYSICAL DATA

Materials

Steel parts Stainless steel
Plastic parts PBT; PC (polycarbonate)
Contact pins Gold-plated

Environment

Working temperature -25 °C to +80 °C
Protection rating IP 67

Note!

Compatible brackets are available for the actuators and handles for LKB butterfly valves.

The M12 counterpart (Socket) connector are not a part of the indication unit package. The wiring and pinout on the M12 plug has changed, compared to the previous side indication units for LKB/LKLA

For further information: See also ESE001257

Options

- Valve compatibility

Accessories

- Various cable options

Compatible actuators

LKLA ø85	Yes
LKLA ø133	Yes

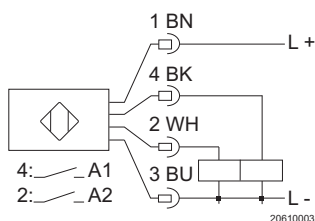
Compatible Valves

LKB	Yes
LKB-2	Yes

Electrical connection

Standard M12 Connection

Pin	Setup
1	Supply +
4	Closed: OUT + 1 (A1)
2	Open: OUT + 2 (A2)
3	Supply -



Alfa Laval reserves the right to change specifications without prior notification.

How to contact Alfa Laval

Contact details for all countries are continually updated on our website. Please visit www.alfalaval.com to access the information direct.