



Alfa Laval Access Tank Cover - Circular Type LKDC

When you need a High Quality Opening

Application

The circular LKDC stainless steel manhole cover is used on top of tanks or containers, especially in the dairy industry, where a hygienic closeable mean of access to the interior of the tank is required.

Working principle

The LKDC cover is supplied with a unique replaceable, self-sealing double lip seal (see fig. 2.) to prevent fluids from spraying out, e.g. during CIP cleaning and similar processes or during travel on mobile tanks or road tankers. The seals are produced in compliance with 3A recommendations.

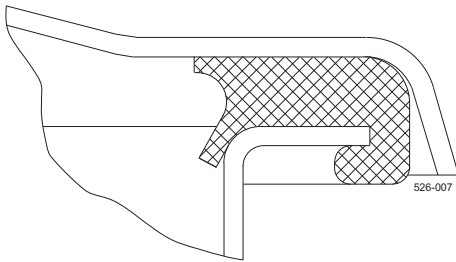


Fig. 2. Double lip seal



TECHNICAL DATA

Working pressure: No pressure

Certificates

3.1 certificate

PHYSICAL DATA

Materials

Lid and frame: 1.4301 (304) or 1.4404 (316L)
 Plastic parts: Nylon
 Seals: EPDM or NBR or FPM or Q (silicone)

Surface finish: Acid Pickled
 Product wetted surfaces: Ra 0.8µm (Excluding external welding zone)
 Other frame and lid surfaces: Ra 0.8µm

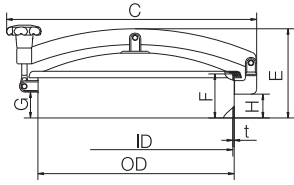
3A surface finish: Electro polished
 Product wetted surfaces: Ra 0.4µm
 Other frame and lid surfaces: Ra 0.4µm (Excluding external welding zone)

Temperature

Min. temperature: - 20°C

Max. temperature: + 90°C (NBR)
 (Q) gasket + 100°C
 (EPDM, not for oil and fat) + 140°C
 (FPM flourinated rubber) + 140°C

Dimensions (mm)

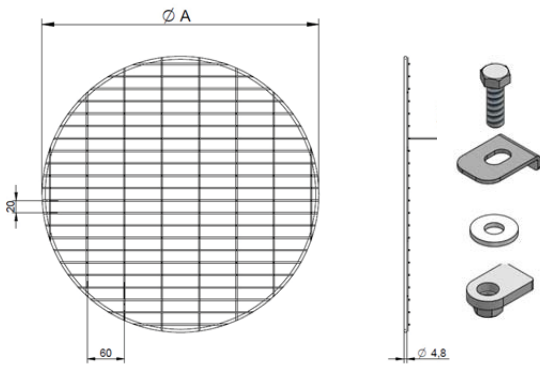


Size/OD	202	306	404	454	454	518	518	620	620
ID	198	302	400	448	448	512	512	614	614
F	85	100	100	100	200	100	200	100	200
t	2	2	2	3	3	3	3	3	3
C	354	457	555	609	609	675	675	778	778
G	48	64	64	60	160	55	155	64	164
H	43	64	59	60	160	56	156	59	159
E	156	146	178	201	301	197	297	203	303
Cover thickness	1.5	1.5	2	2	2	3	3	3	3
Weight (kg)	3.4	6.3	8.3	12.2	15.8	14.4	17.7	18.8	24.3

Option

Wire safety grid

For installation in non-3A approved LKDC manhole covers.



4 pcs screw, M8x25

4 pcs bracket

4 pcs washer

4 pcs support

Dimensions:

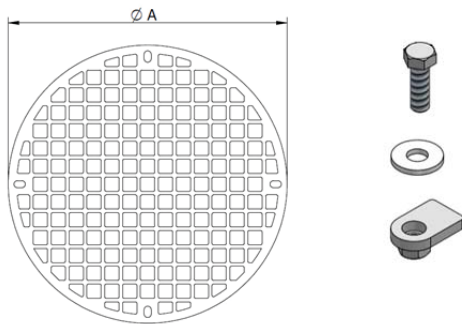
LKDC	$\varnothing A$	
	mm	inch
202	190	7.48
306	298	11.73
404	390	15.35
454	445	17.52
518	498	19.61
620	598	23.54

Material: 316L

Option

Laser-cut safety grid

For installation in non-3A approved LKDC manhole covers.



4 pcs screw, M8x25

4 pcs washer

4 pcs support

Dimensions:

LKDC	$\varnothing A$	
	mm	inch
202	190	7.48
306	296	11.65
404	390	14.96
454	436	17.17
518	500	19.68
620	605	23.82

Material: 316L

Alfa Laval reserves the right to change specifications without prior notification.

How to contact Alfa Laval

Contact details for all countries are continually updated on our website. Please visit www.alfalaval.com to access the information direct.